



VAN TREECK

THE DESIGNER COLLECTION

ARCHITECTURAL GLASS
WITH HISTORY & CHARACTER

It is the story of a long tradition of craftsmanship, which has always been about love. It must never stop and is therefore always looking for new ideas: For the van Treeck designer collection of architectural glass, ten internationally renowned designers stand with their very personal language and passion for an art that must be preserved and strengthened for the future. With these new products, the tradition of the van Treeck stained glass workshop in Munich reaches the interiors of this world and yet remains something very special - namely an exclusive piece of Munich craftsmanship.

OUR PIONEERS FOR THE NEW
VAN TREECK DESIGN PRODUCTS

The exhilarating concepts by Christian Haas, david/nicolas, Elisa Strozyk, Garth Roberts, Gesa Hansen, Milena Kling, Office Heinzelmann Ayadi and Viktor Udzenija take up history and transport it with ease into contemporary architecture. They invite architects, interior designers and decorators to incorporate exceptional hand-crafted glass elements into their projects. Artistic, spatial modules create light-filled spaces, adding elegance to interior designs. Refined glass, with its transparency and light-painting properties, creates exciting reflections and high quality details. The durable material is easy to maintain and each application is planned individually.

OVER 135 YEARS MUNICH
CRAFTS WITH ARTS

Since 1887, the workshops of Gustav van Treeck have been refining flat glass to the highest standards of design and craftsmanship. The artistic works from Munich's Maxvorstadt still adorn sacred and secular buildings around the world. van Treeck architectural glass is a product line that every lover of high-quality craftsmanship and tradition can purchase for all sizes of projects. Whether as room dividers, staircases, balustrades, cabinet doors, furniture (parts), sliding door systems, kitchen backsplashes, shower cubicles, wall or bar panelling, windows, facade design and any other use - the van Treeck ArtaGlass Collection provides special highlights in architecture



DOTS

10



SCRATCH

14



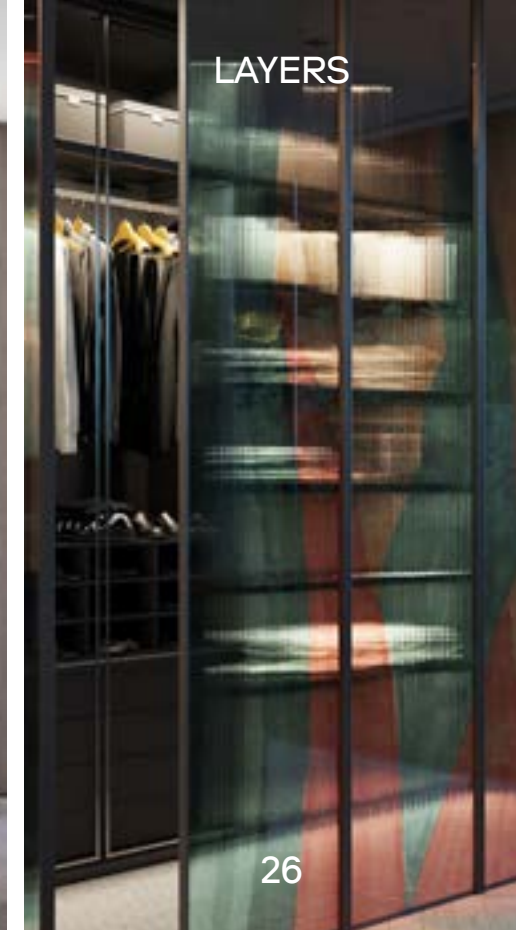
FOLKLORE

18



FRAMES OF COLOURS

22



LAYERS

26



FRESNEL

30



MYTO

34



TEXTIL

38



MOSS

42



AQUARELL

46



MOIRÉE

50



COSMIC MARBLE

54

THE DESIGNERS



CHRISTIAN HAAS

Born in Germany in 1974, Christian Haas established his studio in 2000. Ever since, the industrial designer creates products through multiple disciplines from furniture and lighting to porcelain and glassware. His design approach merges simplicity and elegance. His sense of aesthetics is driven by the harmony between sobriety, usefulness, emotionality, longevity and uniqueness. The Studio works for international brands. Throughout the years, his work was honored with many design awards like the Red Dot Design Award and the Elle Decoration International Design Award.



DAVID/NICOLAS

David Raffoul and Nicolas Moussallem have established a global presence since they set up their studio in Beirut in 2011. Through their interdisciplinary approach they find a retro-futurist design aesthetics. They held several exhibitions and collaborated with established international brands such as Vista Alegre, CC-Tapis, Moooi, Vogue Italia. The designers met at the Lebanese Academy of Fine Arts, where they both studied for a bachelor's degree in Interior Design, going on to undertake master's degrees at the Scuola Politecnica Di Design in Milan. Since 2016, they are represented by the Carpenters Workshop Gallery.



ELISA STROZYK

Educated as a textile designer Elisa Strozyk is building bridges between textile and furniture design, using wood to produce unique textiles and objects. Her work is pushing the boundaries between 2D and 3D, hard and soft materials, switching meanings and categories. The flexible hybrid material "Wooden Textile" was developed by Elisa Strozyk in 2009 using an innovative technique to merge wood and textile. In combining traditional crafting techniques with innovative technical processes, Elisa Strozyk is also using ceramic and glass to develop unique objects for high-end interior projects.



GARTH ROBERTS

The designer founded his studio in 2010, after a series of pop-up projects in collaboration with universities in New York, Berlin and Milan. It operates in various fields of product design and creative direction, developing projects for clients such as CC-Tapis, Glas Italia, Kalmar Werkstätten, Mabeo Furniture, B&B Italia and Zanotta, ranging from high-end furniture to contemporary art. garth's works have received German Design, Elle Decor Awards amongst other international prizes and nominations.



GESA HANSEN

Gesa Hansen graduated from the Bauhaus University Weimar and NZU Nagoya University of Arts in Japan. She made her first work experiences at Jean Nouvel and H5 in Paris. Her design is inspired by the heritage of her scandinavian background and the strong contrast between the two countries who taught her how to be a designer. Her studio is situated in the green lung of Paris, the forest of Fontainebleau. She advises renown furniture, hospitality and design companies.



MILENA KLING

Milena Kling envisions experimental concepts for sophisticated glass objects and artisanal table culture. Her material, colour and process driven contemporary glassworks are realized as unique sculptural products, tableware editions and installations for restaurants, private clients, collectors and architectural projects around the world. Her work is known for her high quality, sensuous, contemporary craftsmanship and ongoing ventures into holistic and sustainable glass artisanship. Kling founded her Berlin centered studio in 2012 after working in London, Zurich and Tokyo.



OHA

OHA (Office Heinzelmann Ayadi) is a Munich based product and furniture design studio. The designers Jan Heinzelmann and Sami Ayadi met at Konstantin Grcic Industrial Design. They were involved in a wide range of projects, from furniture and industrial products to the design of exhibitions, interiors, public installations and limited edition gallery pieces for clients such as Audi, Classicon, Cassina, Galerie kreo, Flos, Magis, Mattiazzi, Plank, Rado or Vitra. Their approach to design is characterised by a strong interest in contemporary design culture, combined with a deep knowledge of craftsmanship and a passion for new technologies and materials.



VIKTOR UDZENIJA

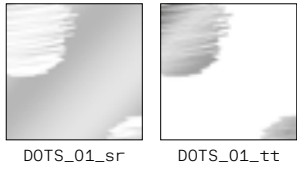
Viktor Udzenija founded his eponymous studio in Dubai, UAE, and expanded to Europe in 2020. In his portfolio, the architect and designer crafted, individual approach to high-quality residential, retail and commercial design. His projects focus on proportion, functionality and sustainability. Udzenija has won a number of international architectural competitions and awards, including „Sustainability Initiative of the Year“ and „Residential Project of the Year“.



DOTS

DOTS, with its hand-textured transparent pattern, creates unique viewports between spaces while mirroring the interior surroundings. This sophisticated combination of reflection and transparency enables a mirrored surface to create an atmosphere of both privacy and curiosity.

Design by Garth Roberts, Berlin



technique: mirroring, laminating
thickness: 9 mm
panel size: max. 150 × 300 cm



technique: mirroring, color foil, laminating
thickness: 9 mm
panel size: max. 140 × 300 cm

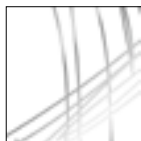




SCRATCH

SCRATCH expresses the visuals of surfaces seen in the public environment etched with urban creativity. The designer expands on this unique combination by adding the element of mirrored glass panels to create a fresh, 'pop culture' detail for contemporary interior projects.

Design by Garth Roberts, Berlin

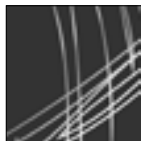


SCRA_01_tt



SCRA_01_sr

technique mirroring, laminating
thickness 9 mm
panel size max. 150 x 300 cm

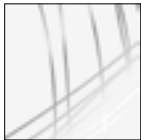


SCRA_02_gy



SCRA_02_sw

technique mirroring, color foil, laminating
thickness 9 mm
panel size max. 140 x 300 cm



SCRA_03_fd

technique mirroring, satinato glass, laminating
thickness 9 mm
panel size max. 150 x 300 cm





FOLKLORE

FOLKLORE is inspired by window scenarios from the past. Fine fabrics are worked into the glass and embroidery patterns become graceful mirrors of our time.

Design by Gesa Hansen, Paris



FOLK_01_sr

technique mirroring, textile, laminating
thickness 9 mm
panel size max. 140 x 300 cm

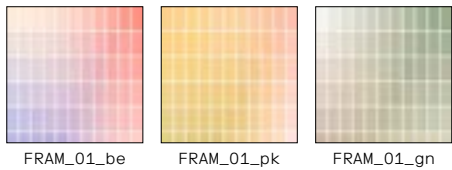




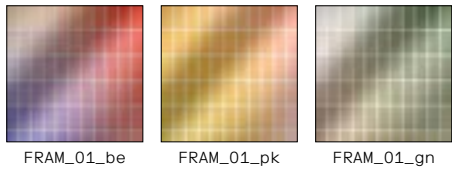
FRAMES OF COLOURS

FRAMES OF COLOURS is reminiscent of the rectangular glazing in sacred buildings that casts geometric light shadows into the room. Delicate colour gradients flow into each other and minimal offsets create shadow edges in the play of colours. When the panels overlap, this wonderful cinema of colour is transformed and intensified.

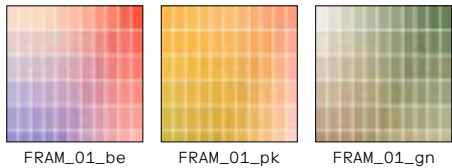
Design by Milena Kling, Berlin



technique printing, laminating
thickness 9 mm
panel size max. 135 x 300 cm

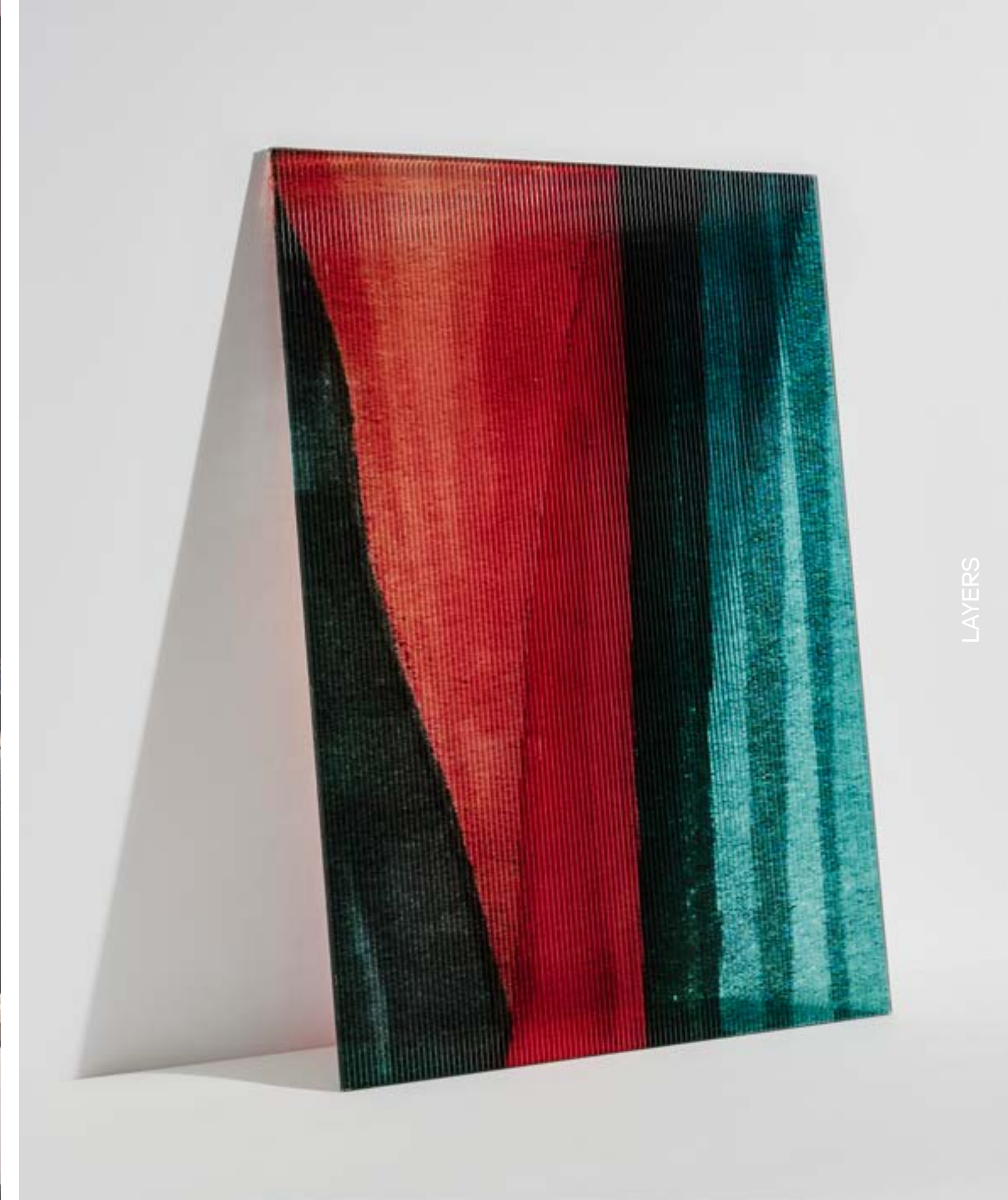


technique printing, mirror, laminating
thickness 9 mm
panel size max. 135 x 300 cm



technique printing, satinato glass, laminating
thickness 9 mm
panel size max. 135 x 300 cm



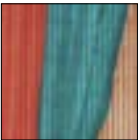


LAYERS

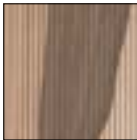
LAYERS

LAYERS is based on a hand drawing.
The motif is reminiscent of the drapery
of sumptuous vestments, as seen in
historic stained glass windows. The
layer of textured glass creates
a contemporary feel.

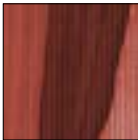
Design by david/nicolas, Beirut



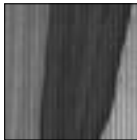
LAYE_01_cr



LAYE_01_ne



LAYE_01_rd



LAYE_01_gy

technique ribbed glass, printing, laminating
thickness 9 mm
panel size max. 135 x 300 cm



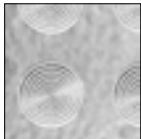


FRESNEL

FRESNEL

FRESNEL lenses play with the distortion of light and space - a new interpretation of bull's eye panes, breaking modern ground by leaving the confines of tradition.

Design by OHA, Munich



FRES_01_tt

technique thermoforming, tempering
thickness 8 mm
panel size max. 140 x 295 cm



FRES_02_yw



FRES_02_be

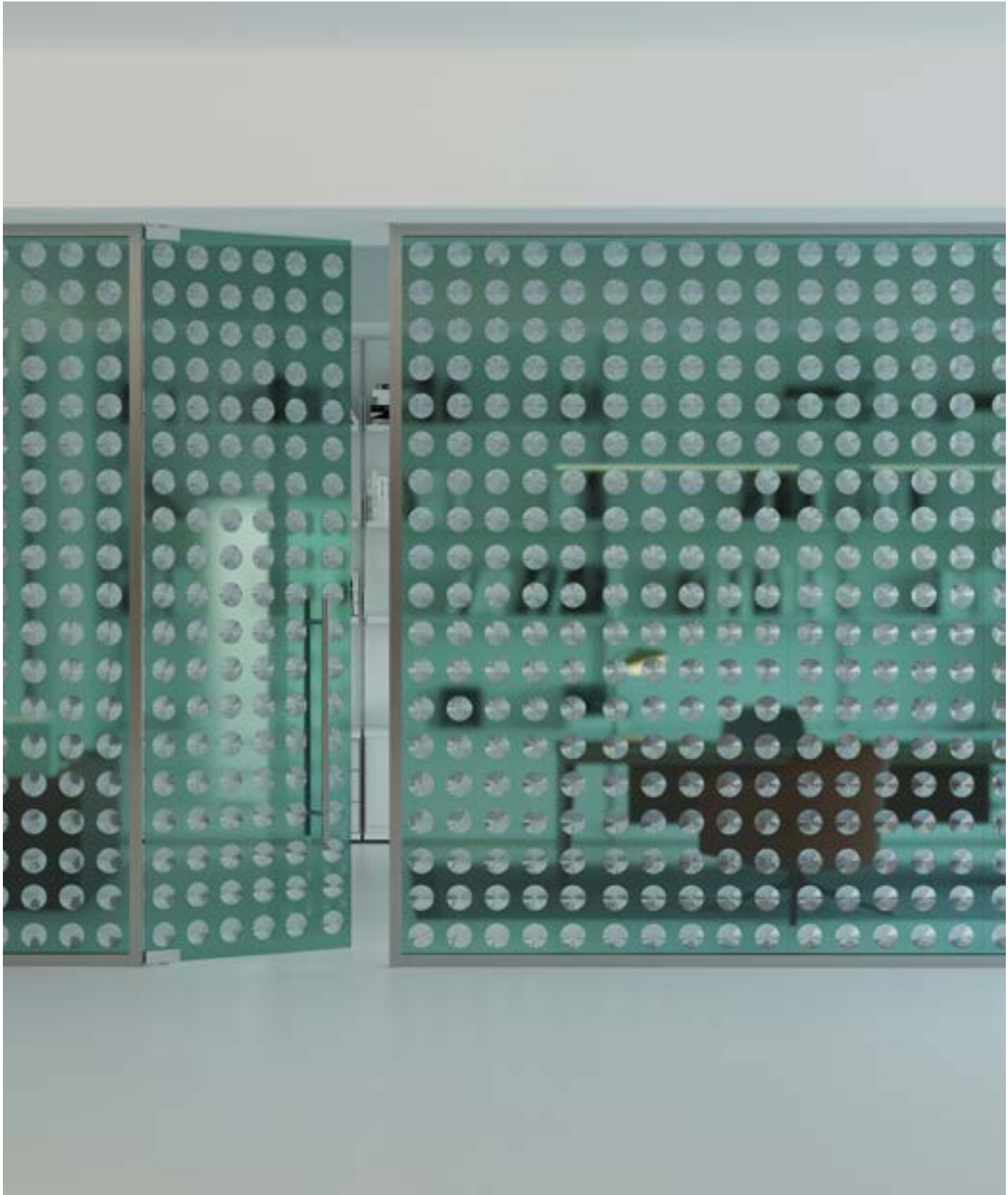


FRES_02_oe



DOTS_02_gn

technique thermoforming, tempering, printing, laminating
thickness 11 mm
panel size max. 135 x 295 cm

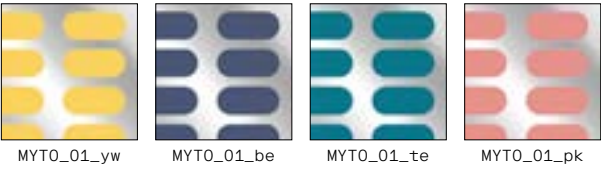




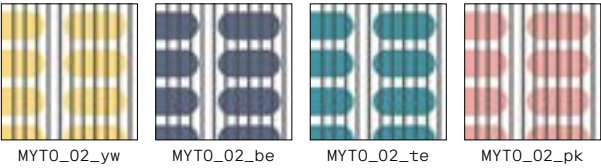
MYTO

MYTO - warning, protecting and at the same time arousing curiosity about what is behind: The play with the graphics of the construction fence creates an unexpected momentum in space.

Design by OHA, Munich



technique mirroring, color foil, laminating
thickness 9 mm
panel size max. 140 x 300 cm



technique ribbed glass, printing, laminating
thickness 9 mm
panel size max. 135 x 300 cm

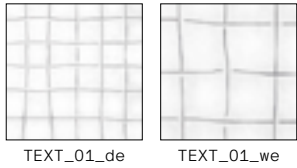




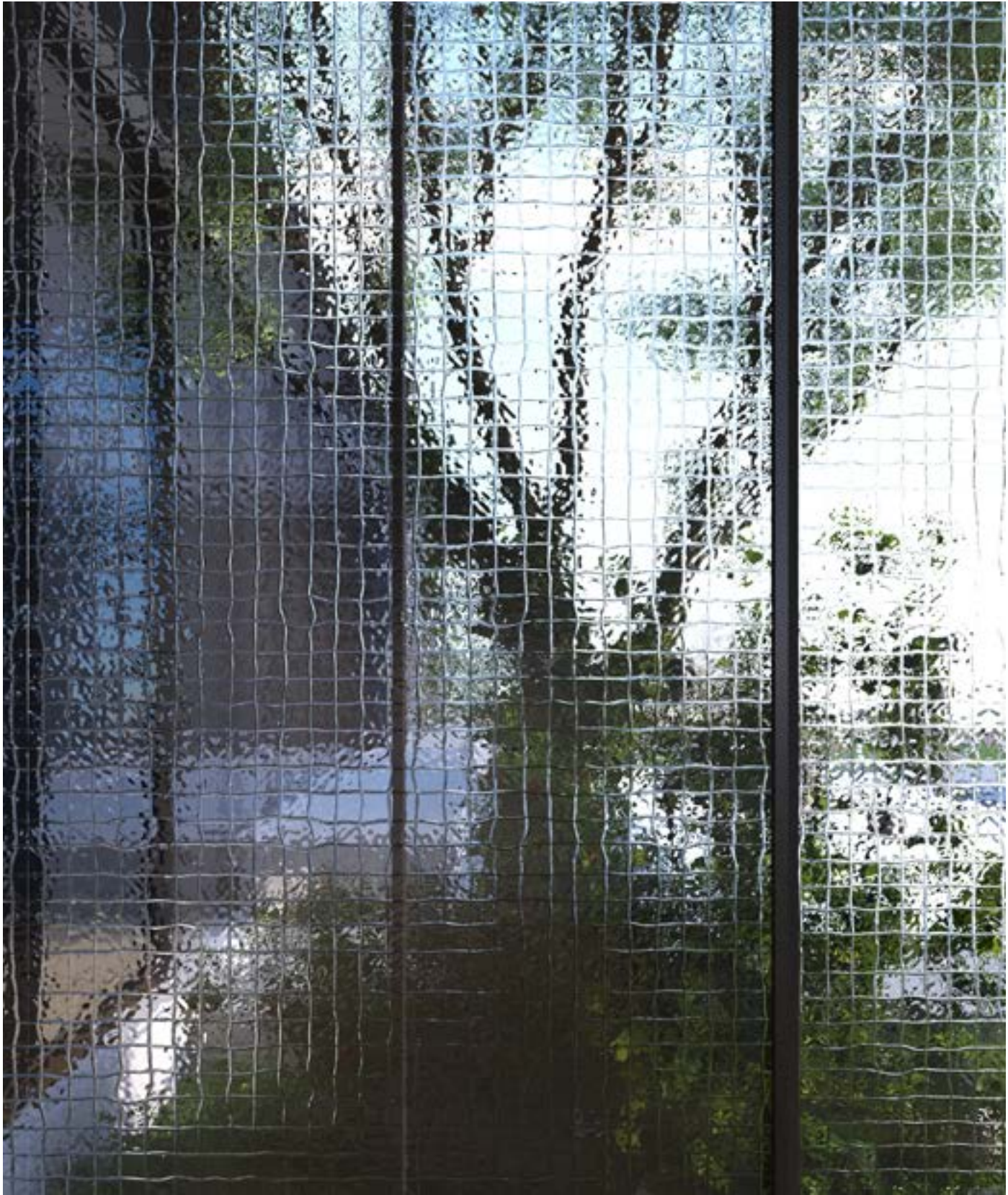
TEXTIL

TEXTIL is a tribute to the filigree patterns of wired glass and woven fabric. The merge of function and artistic imitation makes this product a unique presentation of their beauty. Created by a fusing process fine structures on the glass surface reflect the special aesthetics of these materials in all their depth.

Design by OHA, Munich



technique thermoforming, tempering
thickness 8 mm
panel size max. 135 x 295 cm





MOSS

MOSS embodies the essence of one of the oldest plants on earth. Inspired by the natural growth of moss, our ethereal yet tactile pattern creates a calming, monumental presence.

Design by Christian Haas, Porto



MOSS_01_sr

technique double mirroring, laminating
thickness 9 mm
panel size max. 150 x 300 cm



MYTO_02_we

technique mirroring, sandblasting, laminating
thickness 9 mm
panel size max. 150 x 300 cm



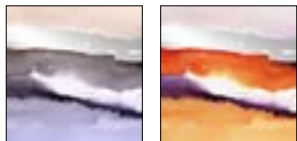


AQUARELL

AQUARELL

AQUARELL Watercolor patterns are turning into misty clouds on glass. The colours flow and collide, creating irregular shapes. An additional reflective layer of mirror imitates the movement of water.

Design by Elisa Strozyk, Berlin



AQUA_01_be

AQUA_01_oe

technique mirroring, printing, laminating
thickness 9 mm
panel size max. 135 x 300 cm

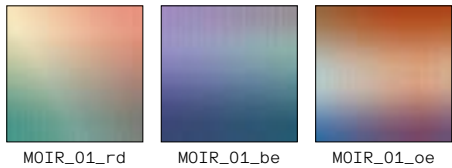
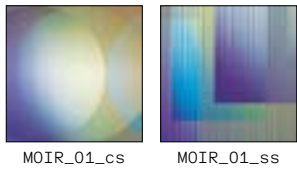




MOIRÉE

MOIRÉE

MOIRÉE uses the optical effect of light-refraction in three dimensional glass to create shifting gradient patterns. Shades of colours are fading and changing by seeing the glass from different angles.



technique ribbed glass, printing, laminating
thickness 9 mm
panel size max. 135 x 300 cm



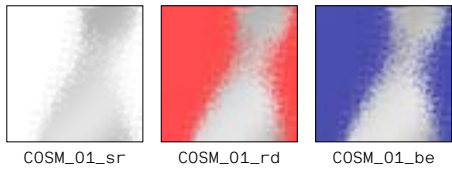


COSMIC MARBLE

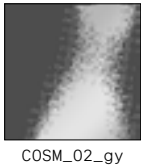
COSMIC MARBLE

COSMIC MARBLE is an evolution of stone.
The pattern catapults you into the
future, into a space dance surrounded
by pixels and mirrors. For 'cosmic
marble' moments.

Design by Viktor Udzenija, Prag



technique mirroring, printing, laminating
thickness 9 mm
panel size max. 135 x 300 cm



technique mirroring, color foil, laminating
thickness 9 mm
panel size max. 140 x 300 cm



IMPRINT

CONTACT
Gustav van Treeck Werkstätten
für Mosaik und Glasmalerei GmbH
Schwindstraße 3
D-80798 München

+49 (0)89 5234085
info@vantreeck.glass
www.vantreeck.glass

Managing directors:
Katja Zukic & Raphaela Knein
Place of jurisdiction:
Munich, HRB 93112
VAT-ID: DE 129 364 796

Bayerische Hofglasmalerei München
The art of glass. Since 1887.

KATALOGDESIGN
Roman Kripahle
upartment büro für visuelle kommunikation
Alissa Arends, Katja Zukic
Gustav van Treeck GmbH

CORPORATE DESIGN
Autostrada Studios, Berlin

VISUALS
Miloš Košanin, Fabian Frinzel,
Gustav van Treeck
Photo E.Strozyk by Studio Been



© 2024 | Gustav van Treeck GmbH

